

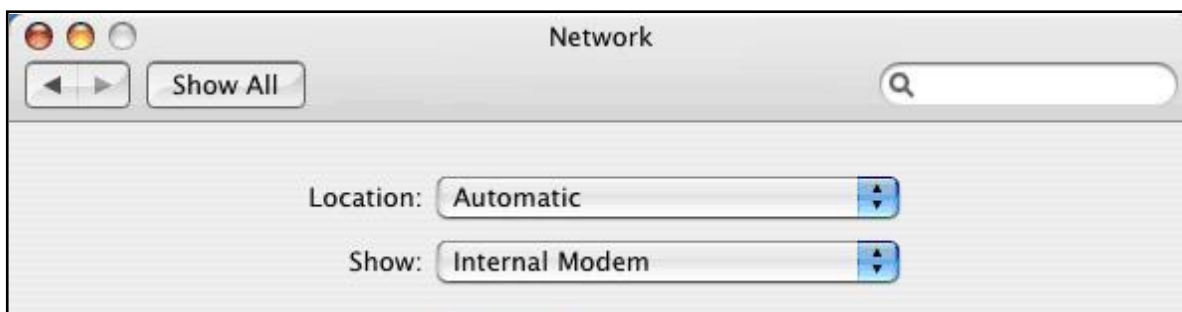
## Dial-up Instructions for Mac OS X

To use **NMSU campus dial-up** on your **Macintosh OS X** computer, you will need a modem and these instructions to connect. You will also need your **myNMSU** user name and password to connect- if you do not have a **myNMSU** account, go to <https://my.nmsu.edu/> to sign up.

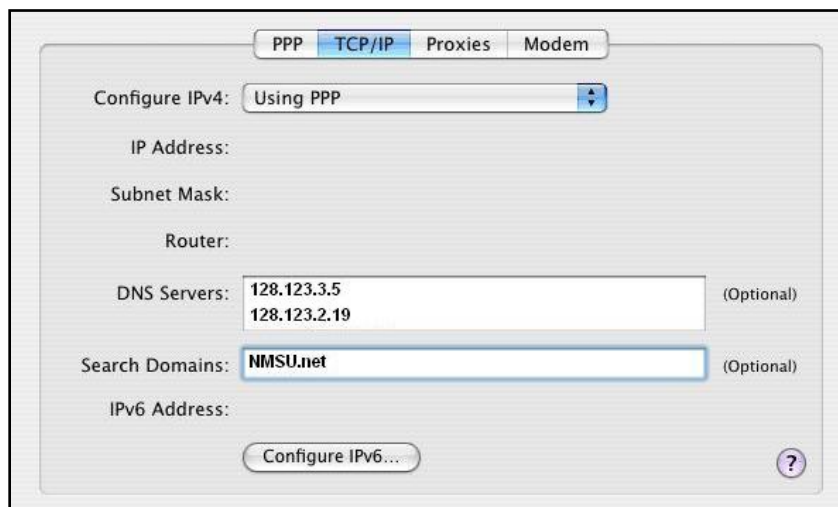
1. From the **Apple** menu, click on **System Preferences**. In the **System Preferences** window, click on **Network** in the group **Internet and Network**.



2. The next window will be the **Network** window. In the **Location** box, select **Automatic** from the menu. In the **Show** box, select **Internal Modem** from the menu.

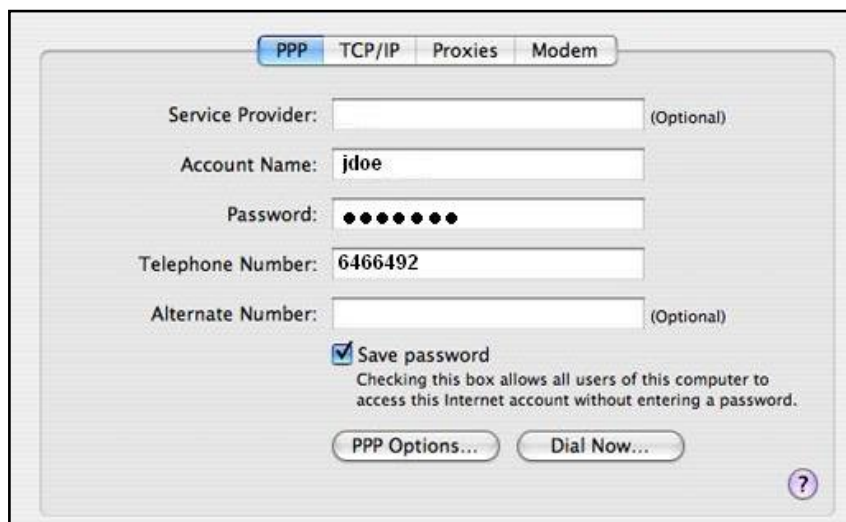


3. In the **Network** window, select the **TCP/IP** tab. Under this tab, select **Using PPP** from the **Configure** box options. In the box labeled **Domain Name Servers**, enter **128.123.3.5** and **128.123.2.19** on separate lines. In the **Search Domains** box, type in **NMSU.net**.



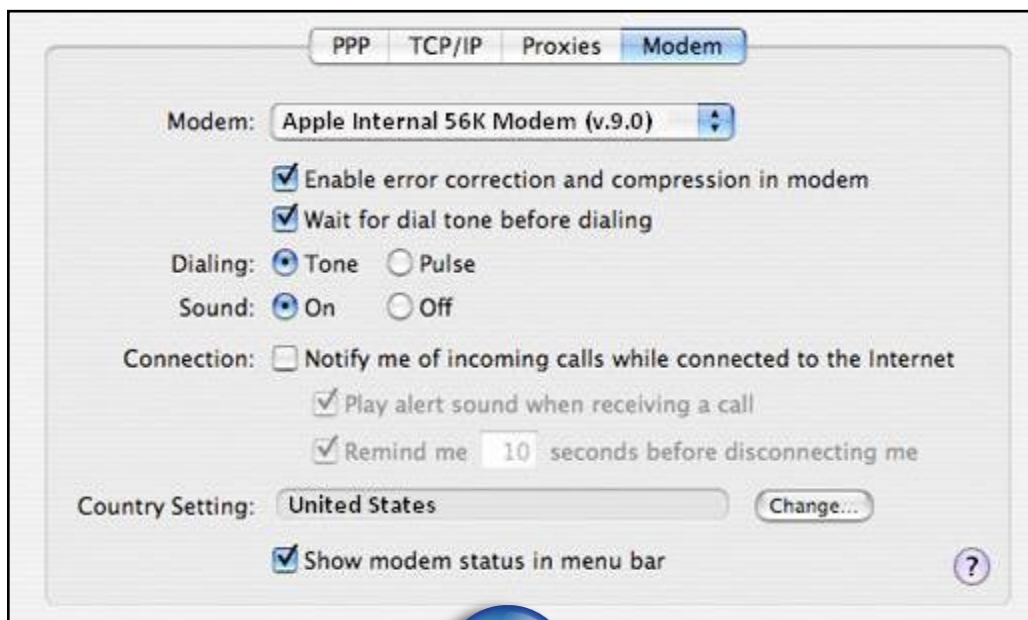
The screenshot shows the Network Configuration window with the **TCP/IP** tab selected. The **Configure IPv4** dropdown is set to **Using PPP**. The **DNS Servers** field contains the addresses **128.123.3.5** and **128.123.2.19**. The **Search Domains** field contains **NMSU.net**. Other fields for IP Address, Subnet Mask, Router, and IPv6 Address are empty. Buttons for **Configure IPv6...** and a help icon are visible at the bottom.

4. Now select the **PPP** tab. In the box labeled **Telephone Number**, type in **646492**. In the box labeled **Account Name**, type in your **myNMSU** user name. In the **Password** box, enter your **myNMSU** password. Then click the **Modem** tab.  
*\*Premium users: the phone number you will use will be either **6478695** or **6478694***

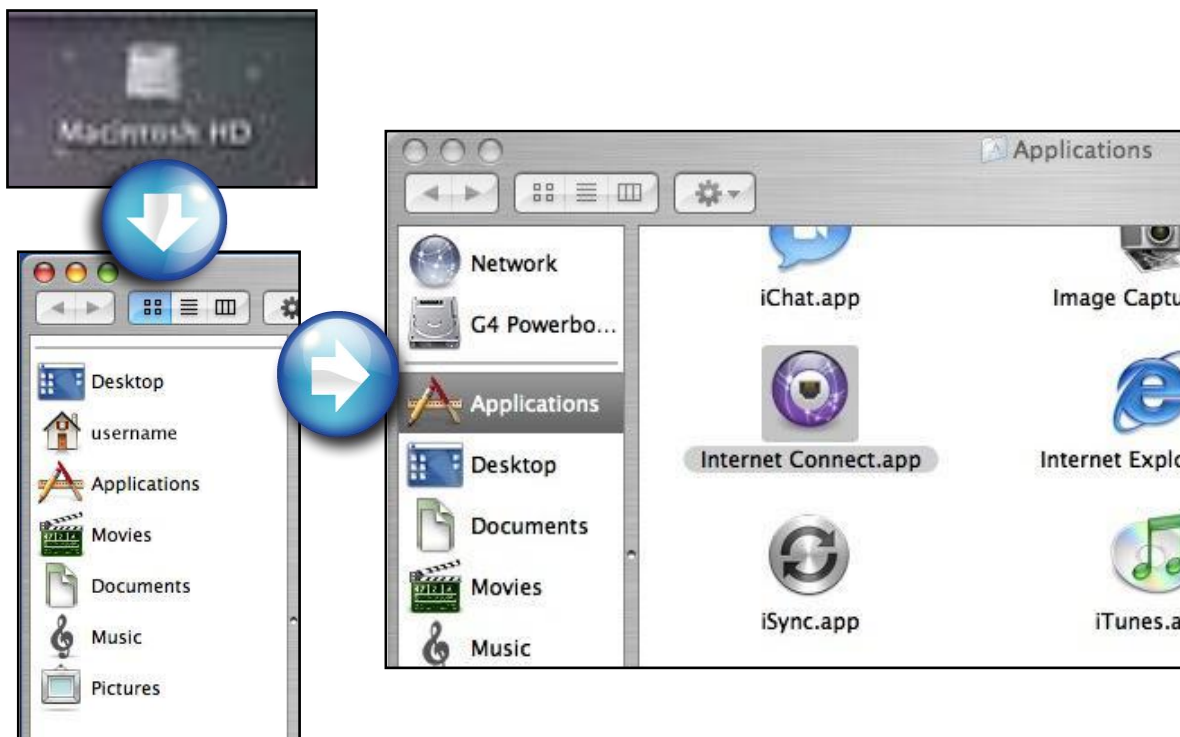


The screenshot shows the Network Configuration window with the **PPP** tab selected. The **Account Name** field contains **jdoe**, the **Password** field is masked with dots, and the **Telephone Number** field contains **6466492**. The **Save password** checkbox is checked. Buttons for **PPP Options...** and **Dial Now...** are visible at the bottom.

- In the **Modem** tab, make sure that the option **Show modem status in menu bar** is checked. Now click the **Apply Now** button.



- To dial-in, double-click the **Macintosh HD** icon on the **Desktop**. Click on **Applications** in the left-hand sidebar. In the **Applications** window, click on **Internet Connect**.



Congratulations! You have now set up your computer for **NMSU campus dial-up**.

If you have any questions, come by the **ICT Customer Service and Help Desk** in **room 140** of the **Computer Center**, call **646-1840**, or e-mail us at [help@nmsu.edu](mailto:help@nmsu.edu).